

MAGNETIC CONNECTOR CARRIAGE (SMALL)

THE PARTS

Screws

Housing - Top

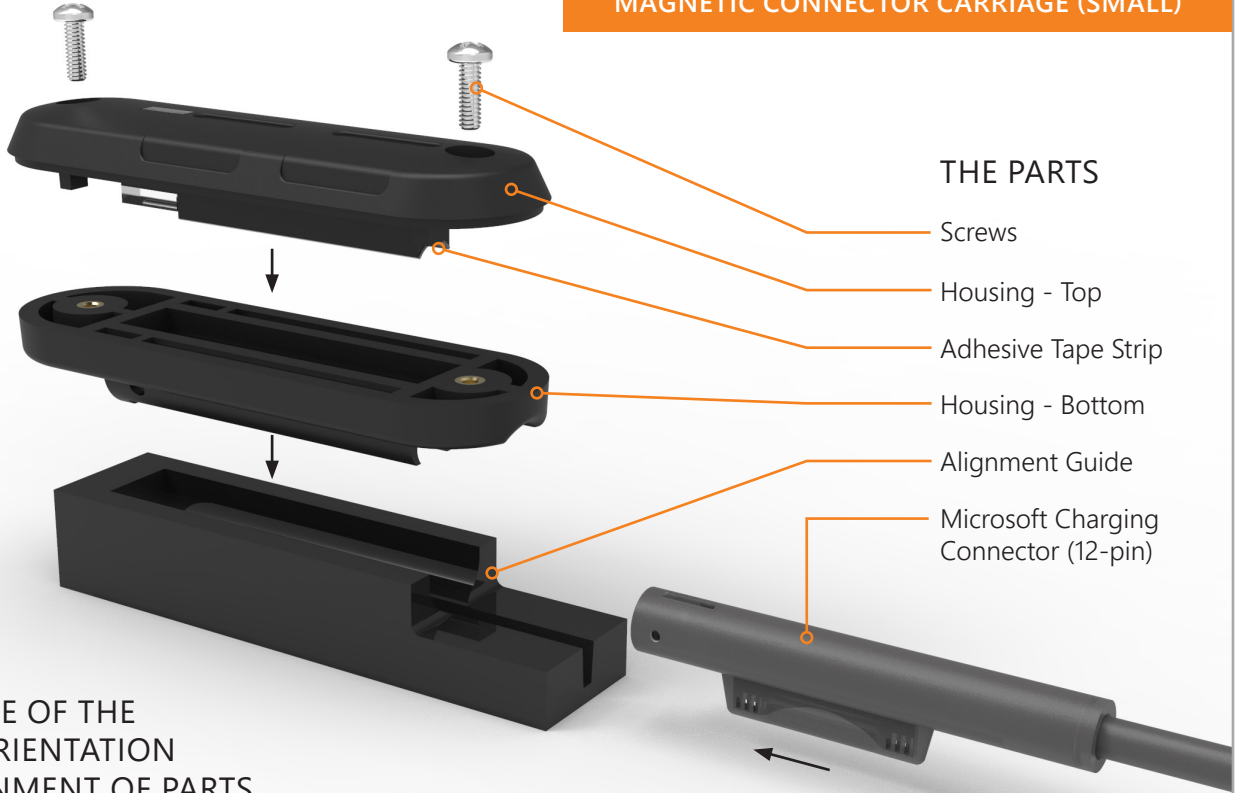
Adhesive Tape Strip

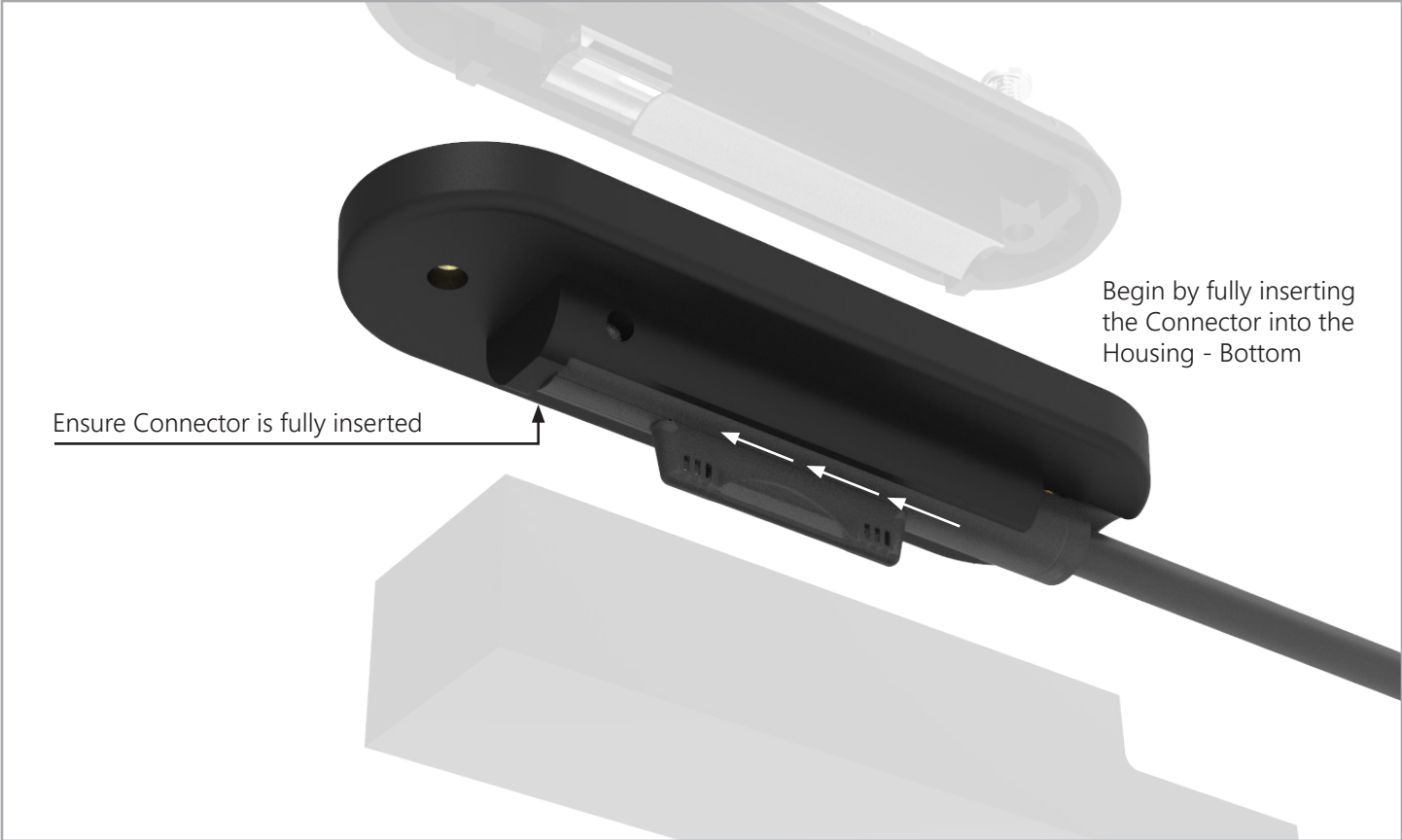
Housing - Bottom

Alignment Guide

Microsoft Charging Connector (12-pin)

MAKE NOTE OF THE
PROPER ORIENTATION
AND ALIGNMENT OF PARTS





Ensure Connector is fully inserted

Begin by fully inserting the Connector into the Housing - Bottom



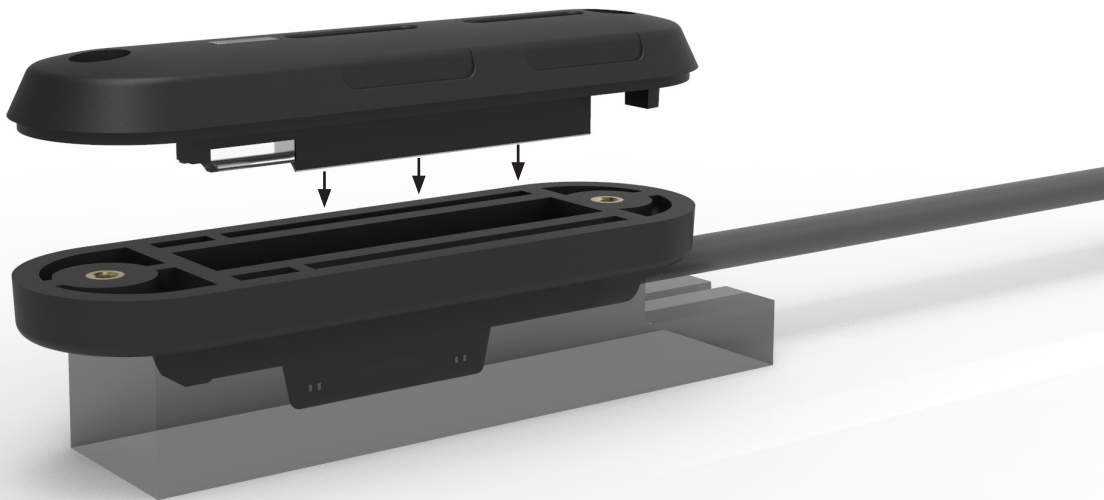
Next seat the Housing - Bottom and Connector fixture into the Alignment Guide.



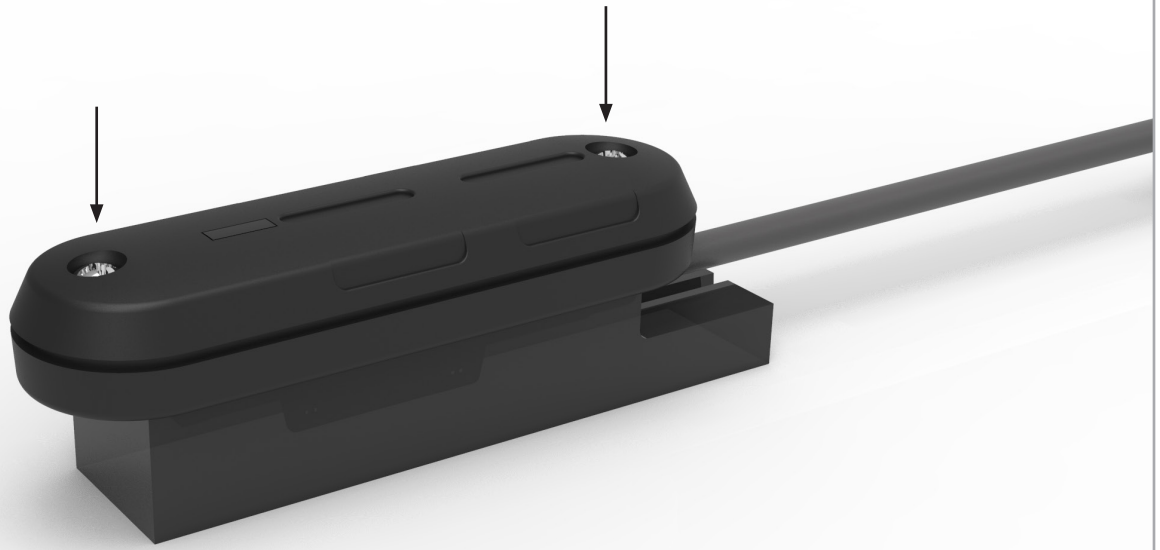
Be sure the fixture is in the forward most position.



Remove the liner from the adhesive strip on the Housing - Top piece and press firmly onto Housing Bottom.



Insert 2mm T8 Torx screws



Remove Alignment Guide and the
Magnetic Charging Connector is
now ready for use.

